



mounting
systems



Theta

Flexible applications

Theta readily allows the integration of framed and unframed photovoltaic modules into new and add roofs regardless of the type of roof covering.¹ The system is mounted on top of the existing roof battens and replaces the regular roof cladding.

High impermeability

Thanks to its substructure, the Theta meets the same requirements for waterproofing as a conventional roof. The special adaptors ensure optimum ventilation while transmitting the occurring loads into the roof structure.²

Individual array

The roof can be entirely or partly covered with modules. Essentially, all connected module arrangements and integration of windows³ are possible.

Appealing optics

The Theta blends in harmoniously with the roof skin and creates an aesthetic module mounting system.

Static reliability assured

Using Mounting Systems' configuration software, the material for any standard configuration can be calculated in minutes, project-specific, assessable static verification (based on the applicable national norms) included.

Maximum service life

All components are made of extruded aluminium and stainless steel. This choice of material guarantees both full recyclability and a maximum service life due to high resistance to corrosion.

- ¹ The Theta System is compatible with nearly all conventional types of roofing tile, formwork and slate roofing. For detailed information, please contact us before you commence planning.
- ² Complies with German roofing regulations. Any installation must also be in accordance with local roofing regulations.
- ³ Subject to previous checking.



In-roof



Unframed module



Framed module



Orientation
portrait



Orientation
landscape



Double Roman
Tiles



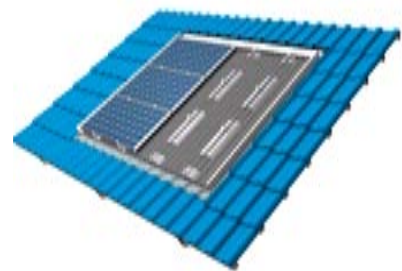
Slate



Plain Tiles



Bitumen shingles



Installation in landscape orientation





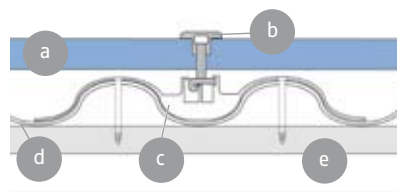
Application	<i>Pitched roof-integration</i>
Roof cladding	<i>Suitable for most types of roof cladding</i>
Roof slope	<i>10° to 45° (other slopes on request)¹</i>
PV modules	<i>Framed, unframed</i>
Type of mounting	<i>Flat</i>
Module layout	<i>Connected surfaces, as well as entire roof. Integration of windows possible (subject to previous checking).</i>
Module orientation	<i>Landscape, portrait</i>
Size of the module array	<i>Any size possible</i>
Position of the module array	<i>No special requirements</i>
Roof structure	<i>Battens as for conventional tile covering².</i>
Standards	<i>Eurocode 1 - Actions on structures</i>
Supporting profiles	<i>Extruded Aluminium (ENAW 6063 T66)</i>
Small parts	<i>Stainless steel (V2A)</i>
Flashing (lateral & top)	<i>Aluminium</i>
Corrugated metal	<i>Aluminium</i>
Lower flashing	<i>Ubiflex, lead strip</i>
Colour	<i>Profiles/sheeting: natural Ubiflex/lead: dark grey</i>
Warranty	<i>10 years³</i>



Adapter for module orientation landscape with Quickstone channel

Warning! Waterproofing of the roof is heavily dependent on correct installation! To avoid problems, we would be pleased to provide you with training, or can arrange to have one of our installers come out.

For further information, please contact us.



Horizontal section

- a PV module
- b Module clamp
- c Adapter for landscape installation
- d Corrugated sheet
- e Roof batten

1 Complies with German roofing regulations. Any installation must also be in accordance with local roofing regulations.
2 The standard screws are dimensioned for roof battens 30 x 50 mm in wood classification 10. Other on request.
3 Please find the exact terms in the Mounting Systems GmbH Warranty document.